

**INT**

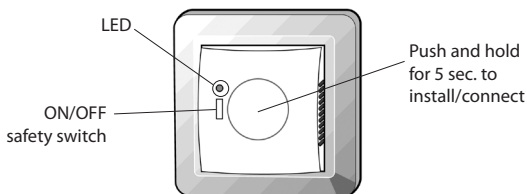
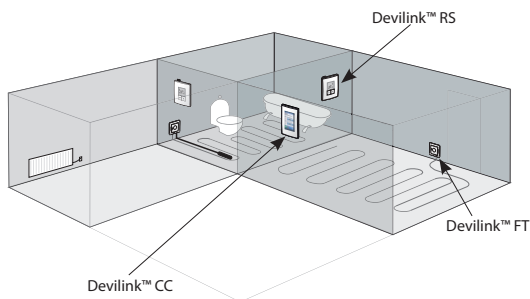
# ***Devilink™ FT – Floor Thermostat Installation Manual***



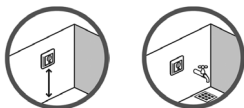
The Devilink™ FT (Floor Thermostat) is a device for switching the heating element ON/OFF.

In connection with a floor sensor it can also measure the temperature in the floor (FTS). Secondly you have the possibility to use the FT as a on and off switch to other equipments manually or by schedule.

Installation scenario:



# Placement of Devilink™ FT



Installation and placement must be according to local building regulations.

## Operation mode

Devilink™ FT supports two types of operation modes.

1. Heating regulation
2. On/OFF switching

When used in heating regulation mode you have to consider the following advices for controlling the heating.

When used as simple ON/OFF mode do not connect floor sensor.

## Sensor combination

When installing the Devilink™ FT you need to consider the type of heating and thus which sensors should be used.

There are three options:

- 1. Comfort heating:** Constant temperature on the floor in bathrooms and other rooms where a comfortable warm surface is required. Install the Floor sensor and choose Floor regulation for the room when doing the configuration.
- 2. Total heating:** Control of room temperature in living rooms etc. Install the floor sensor and a Devilink™ RS. Choose Combined regulation when doing the configuration on the Devilink™ CC.
- 3. No floor sensor:** A floor sensor is not present, and cannot be installed. You must install a Devilink™ RS. Choose Room regulation.

## *Placement of Devilink™ FT*

Be aware that temperature control is less accurate without the floor sensor and that all Devilink™ FTs in a room need to have the same sensor configuration.

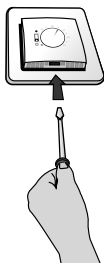
Devi recommends always installing a floor sensor.

**Do not install floor heating system without a floor sensor when the heating element is installed on or beneath wooden surfaces and other surfaces sensitive to temperature!**

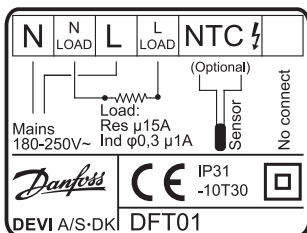
# Installation of Devilink™ FT

## Installation of Devilink™ FT

1. To remove the front cover, gently press the release tabs under the bottom of the thermostat with a screwdriver. Then remove the front.



2. Connect the thermostat according to the connection diagram.



## Configuration:

See Step-by-Step guide in Devilink™ CC instruction manual.

## Trouble shooting

Green LED ON	Standby
Red LED ON	Heating
Green LED fast flash	Inclusion or link test
Red LED short flash	Inclusion not OK, goes to not included. Linktest not OK, goes to missing link
RED LED slow flash	Sensor failure

### Factory reset a Devilink™ FT

Turn off power on the safety switch on the front. Hold the install button in while pushing ON the safety switch and keep the install button pressed until the LED gives a red flash (approx. 5 sec.)

## *Disposal Instruction*



## Technical specifications

<b>Operation voltage</b>	180-250 VAC, 50/60 Hz
<b>Standby power consumption</b>	Max. 1 W
<b>Relay:</b> <ul style="list-style-type: none"><li>• Resistive load</li><li>• Inductive load</li></ul>	230 V ~ 15 A / 3450 W $\cos \phi = 0.3$ Max. 1 A
<b>Sensing unit</b>	NTC 15 kOhm at 25°C
<b>Sensing values:</b> <ul style="list-style-type: none"><li>• 0°C</li><li>• 20°C</li><li>• 50°C</li></ul>	42 kOhm 18 kOhm 6 kOhm
<b>Regulation</b>	PWM
<b>Ambient temperature</b>	-10° to +30°C
<b>Sensor failure monitoring</b>	The thermostat has a built-in monitoring circuit, which will switch off the heating if the sensor is disconnected or short-circuited
<b>Transmission frequency</b>	868.42 MHz
<b>Transmission range in normal buildings</b>	Up to 30 m
<b>Transmission power</b>	Max. 1 mW
<b>IP class</b>	31
<b>Dimensions</b>	85 mm × 85 mm × 21 mm





# *The 2 Year DEVI Warranty*

You have purchased a DEVI heating system which we are sure will serve to improve the comfort and economy of your application.

DEVI provides superior electrical heating solutions for total climate control in and around homes and buildings. DEVI offers a complete product program with Deviflex™ heating cables or Devimat™ heating mats, Devireg™ thermostats, Devifast™ fixing strips and Devi Self-limiting heating cables combined with additional products completing the product program.

This 2 year warranty applies to all DEVI products.

Should you, against all expectations, experience a problem with your DEVI product, you will find that DEVI offers a 2 year warranty from the date of purchase on the following conditions:

During the warranty period DEVI shall offer a new comparable product or repair the product in case the product is found to be faulty by reason of defective design, materials or workmanship. Repair or replacement shall be carried out at DEVI's discretion. DEVI shall not be liable for any consequential or incidental damages including, but not limited to, damages to property or extra utility expenses.

This warranty shall only be valid on production of proof of purchase and must be submitted to the installer or seller without undue delay.

An extension of the warranty period following repairs undertaken under warranty cannot be granted.

The DEVI Warranty shall not cover any damage caused by incorrect conditions of use, incorrect installation or if installation has been carried out by non-authorised electricians. All work will be invoiced in full if DEVI is required to inspect or repair faults that have arisen as a result of any of the above.

The DEVI Warranty shall not extend to equipment which has not been paid in full.

DEVI will, at all times, provide a rapid and effective response to all complaints and inquiries from our customers.

The warranty explicitly excludes all claims exceeding the above conditions.

# *The 2 Year DEVI Warranty*

## **Warranty Certificate**

**The DEVI™ Warranty is granted to:**

Name:

---

Address

---

City:

Country:

Telephone:

---

### **Attention:**

The Warranty Certificate must be completed correctly for the Warranty to be valid.  
Please read the Warranty conditions above.

Type of thermostat:

Electrical installation by:

---

Article number:

Date:

---

Suppliers Stamp:



**Article No: 08095924**

**Version: 02.02**

DEVI A/S  
DK • 7100 Vejle  
Phone +45 7488 8500  
Fax +45 7488 8501

VICKB202 09/2009

